

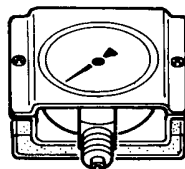
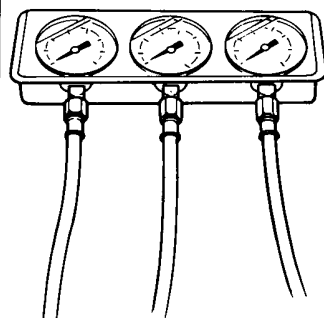
Pressure Test

NOTE:

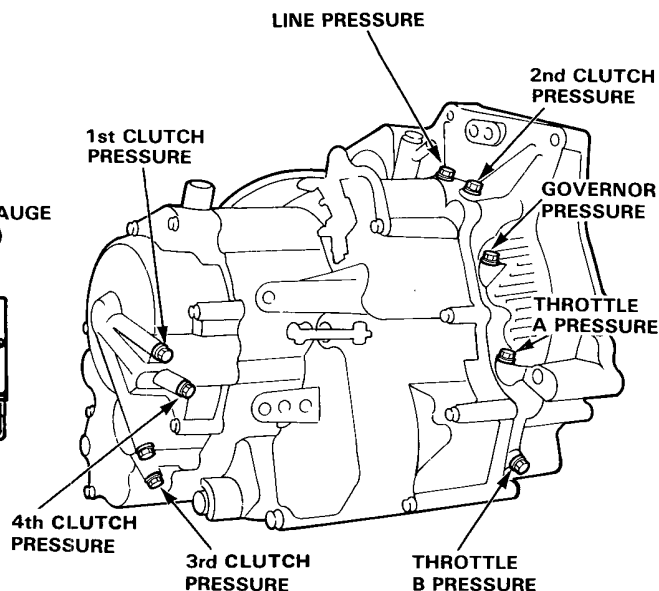
- Stop engine when attaching hoses for pressure tests.
Torque hose fitting to 18 N·m (1.8 kg-m, 12 lb-ft).
- Do not reuse aluminum washers.
- For throttle and governor test, use Low Pressure Gauge, 07406-0070000.

GAUGE SET 07406-00200002
(includes pressure hose set 07406-0020201)

LOW PRESSURE GAUGE
(07406-0070000)



HOSE FITTING



CAUTION: Before checking, be sure transmission is filled to proper level.

PRESSURE	SELECTOR POSITION	MEASUREMENT	SYMPTOM	PROBABLE CAUSE	FLUID PRESSURE	
					Standard	Service Limit
LINE	N or P	<ul style="list-style-type: none"> With parking brake applied Run engine at 2,000 min⁻¹ (rpm) 	No (or low) LINE pressure	Torque converter, oil pump pressure regulator, torque governor check valve, oil pump	784-833 kPa (8.0-8.5 kg/cm ² , 112-126 psi)	735 kPa (7.5 kg/cm ² , 105 psi)
1st	D3 or D4	MEASUREMENTS <ul style="list-style-type: none"> With parking brake applied raise front wheels off ground and support with safety stands Run engine at 2,000 min⁻¹ (rpm) 	No (or low) First pressure	1st clutch O-ring	784-833 kPa (8.0-8.5 kg/cm ² , 112-126 psi)	735 kPa (7.5 kg/cm ² , 105 psi)
2nd	2		No (or low) SECOND pressure	2nd clutch O-rings	441-833 kPa (4.5-8.5 kg/cm ² , 63-119 psi)	392 kPa (4.0 kg/cm ² , 57 psi) with lever released, 735 kPa (7.5 kg/cm ² , 105 psi) with lever in full throttle position
3rd	D3		No (or low) THIRD pressure	3rd clutch	varies with throttle open.	
4th	D4 R		No (or low) FOURTH pressure	4th clutch Servo valve		
THROTTLE	D3 or D4	<ul style="list-style-type: none"> With parking brake applied raise front wheels off ground and support with safety stands. Run engine at 1,000 min⁻¹ (rpm) Disconnect throttle control cable at throttle lever. Read pressure with lever released. Manually push lever up simulating full throttle. Read pressure with lever in full throttle position. 	No (or low) THROTTLE pressure	Throttle valve A Throttle modulator valve	0 kPa (0 kg/cm ² , 0 psi) with lever is released. 446-461 kPa (4.55-4.70 kg/cm ² , 65-67 psi) *515-530 kPa (5.25-5.40 kg/cm ² , 75-77 psi) with lever in full throttle position.	441 kPa (4.50 kg/cm ² , 64 psi) *510 kPa (5.20 kg/cm ² , 74 psi) With lever in full throttle position.
				Throttle valve B	0 kPa (0 kg/cm ² , 0 psi) with lever is released. 784-833 kPa (8.0-8.5 kg/cm ² , 112-119 psi) with lever in full throttle position.	735 kPa (7.5 kg/cm ² , 105 psi)
GOVERNOR	D3 or D4	<ul style="list-style-type: none"> Place vehicle on chassis dynamometer, or jack up front of car, support with safety stands, block rear wheels, and set hand brake. Run vehicle at 60 km/h 	No (or low) GOVERNOR pressure	Governor valve	153-163 kPa (1.56-1.66 kg/cm ² , 22-24 psi) *208-218 kPa (2.12-2.22 kg/cm ² , 30-31 psi)	148 kPa (1.51 kg/cm ² , 21 psi) *203 kPa (2.07 kg/cm ² , 29 psi)

* KS and KX type